

MT 52

Thermostatic Mixing Valve



Limits and maintains constant levels of mixing temperatures in systems

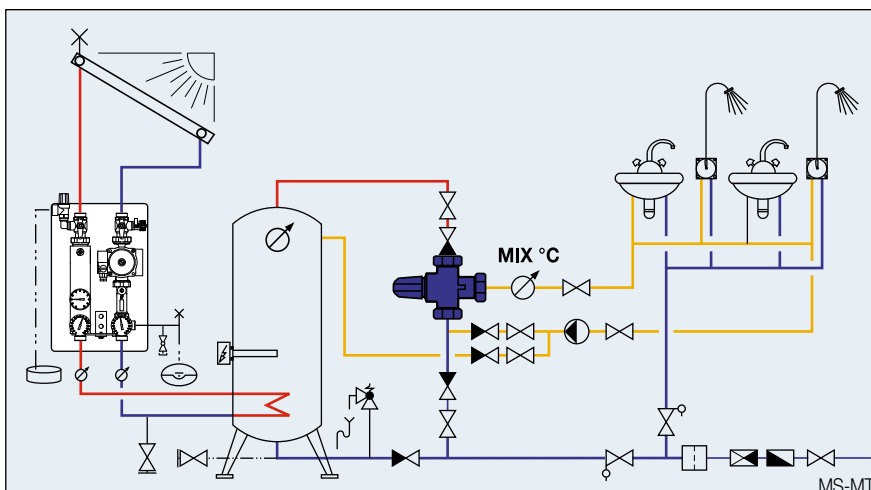
Description

The automatic thermostatic mixing valve MT 52 ensures a constant temperature of the mixed water at the outlet when used as the central mixing device.

The MT 52 is mainly used in sanitary applications as a regulating device for reducing the temperature of the water coming out of hot water storage tanks. It can also be used in numerous other applications requiring a constant mixing temperature, for example as a thermostatic mixing device in heating systems or as a diverting valve in climate control applications.

Advantages

- Constant temperature of the water at the outlet
- Automatic mixing function without the need for auxiliary power
- Infinite regulation of the nominal temperature in 2 ranges: 20–40 °C / 30–70 °C
- Special design with anti-scalding device
- Pipes and draw-off fittings are protected against calcification and corrosion
- Can also be used as a diverting valve (temperature differentiation)
- Can be used to raise the return temperature



Operation

Standard design:

A thermostatic cartridge and a return spring ensure the constant blend temperature at the outlet. Thanks to the design of the mixing valve, the thermostatic cartridge can be easily replaced in the installed valve if the performance decreases, which occurs due to normal wear and tear.

Special design MT 52 FS:

In the case of cold water failure, the hot water supply shuts off automatically and hermetically.

Type program

MT 52 Standard version (for storage water heater)

Code no.	DN	G	Temp. range	TB	E (l/min)	k _{VS} 1	k _{VS} 2	Features
252.6003.104	20	1"	30 – 70 °C	100 °C	39	1,9	1,65	—
252.6004.104	25	1 ¼"	30 – 70 °C	100 °C	53	2,6	2,25	—
252.6023.104	20	1"	20 – 40 °C	80 °C	39	1,9	1,65	—
252.6024.104	25	1 ¼"	20 – 40 °C	80 °C	53	2,6	2,25	—

MT 52 Standard version (for instant water heater)

252.6043.104	20	1"	30 – 70 °C	100 °C	22	1,1	0,7	—
---------------------	----	----	------------	--------	----	-----	-----	---

MT 52 Special version (hermetic, for storage water heater)

252.6003.107	20	1"	30 – 70 °C	100 °C	39	1,9	1,65	•
252.6004.107	25	1 ¼"	30 – 70 °C	100 °C	53	2,6	2,25	•

E = extracted (outlet) quantity at $\Delta p = 1,5$ bar
 • = protection against scalding, shuts off hermetically

k_{VS} 1 = without check valve
 k_{VS} 2 = with check valve

Specification text

The thermostatic mixing valve ensures a constant temperature of the mixed water at the outlet.

Long durability thanks to use of high-quality plastics and non-stick coatings to prevent limescale buildup.

Infinite regulation of the mixed water temperature.

Technical data

Max. operating temperature (TB), temperature range and k_{VS} values see table "Type program".

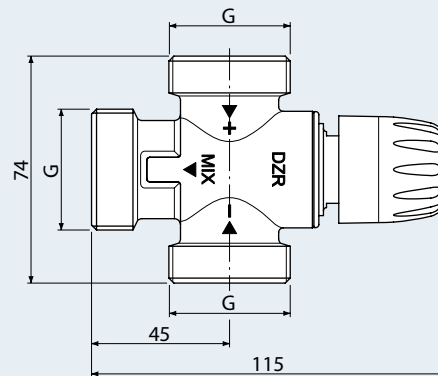
Max. operating pressure: 10 bar

Material:

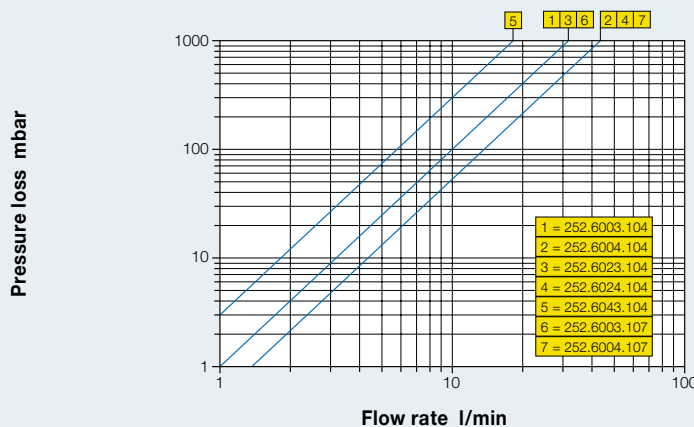
Housing and internal parts: Brass (DZR)
 Seals: EPDM

Special version MT 52 FS with anti-scald protection, watertight shut-off in the event of cold water failure

Dimensions



Pressure loss diagramm without check valve



Accessories



Check valves

TB 95 °C, PB 10 bar, to be mounted in the warm and cold water inlet
 Set of 2 parts

Code no.	fits to code no.:
296.5203.003	252.6003.XXX / 252.6023.104 / 252.6043.104
296.5204.003	252.6004.XXX / 252.6024.104

Spare parts

Thermostat unit with regulating piston
 (see price list)