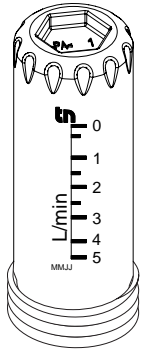


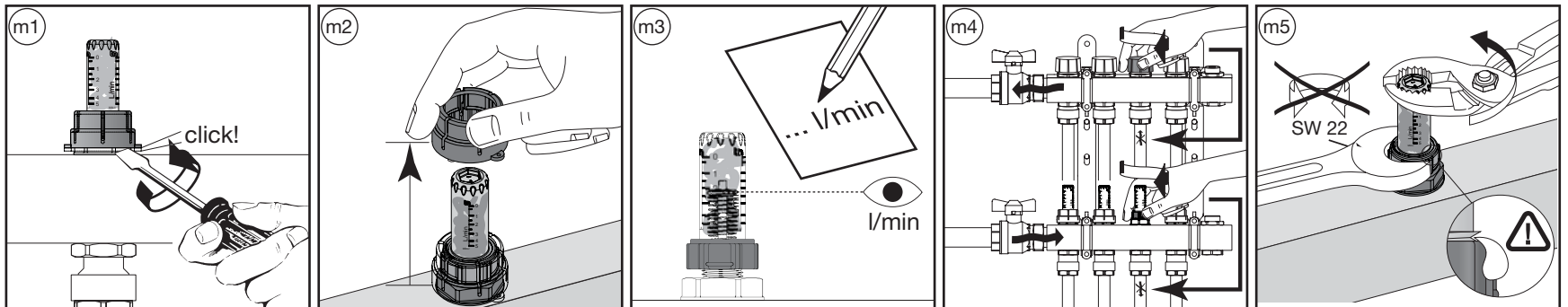
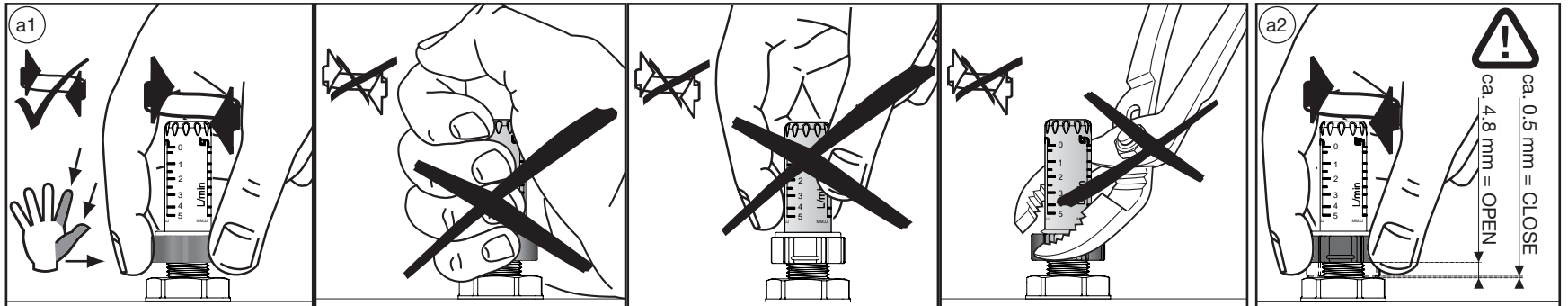
# AY 98 TOPMETER VL – KIT



AO 23		AY 98		AO 23		G	l/min	⇒	AY 98	l/min
				223.5505.____	1/2"	0 ..... 5.0	⇒	298.2316.000	0 ..... 5.0	
				223.5605.____	3/8"	0 ..... 5.0	⇒	298.2316.000	0 ..... 5.0	

*Note: The diagram shows the AO 23 topmeter being viewed through the AY 98 topmeter's scale, with the text "l/min = l/min" indicating the scale equivalence.*

N°	l/min
298.2316.000	0 – 5.0



TB	-10...70°C	
PB	6 bar	



# AY 98 TOPMETER VL – KIT

