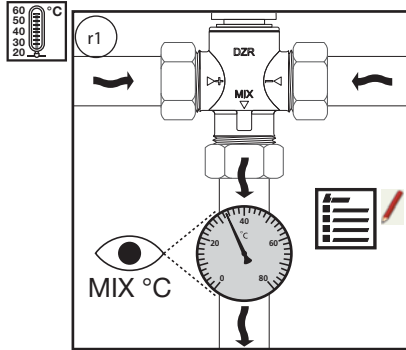
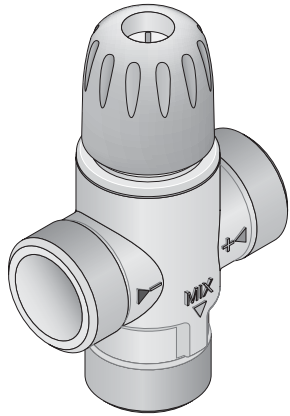
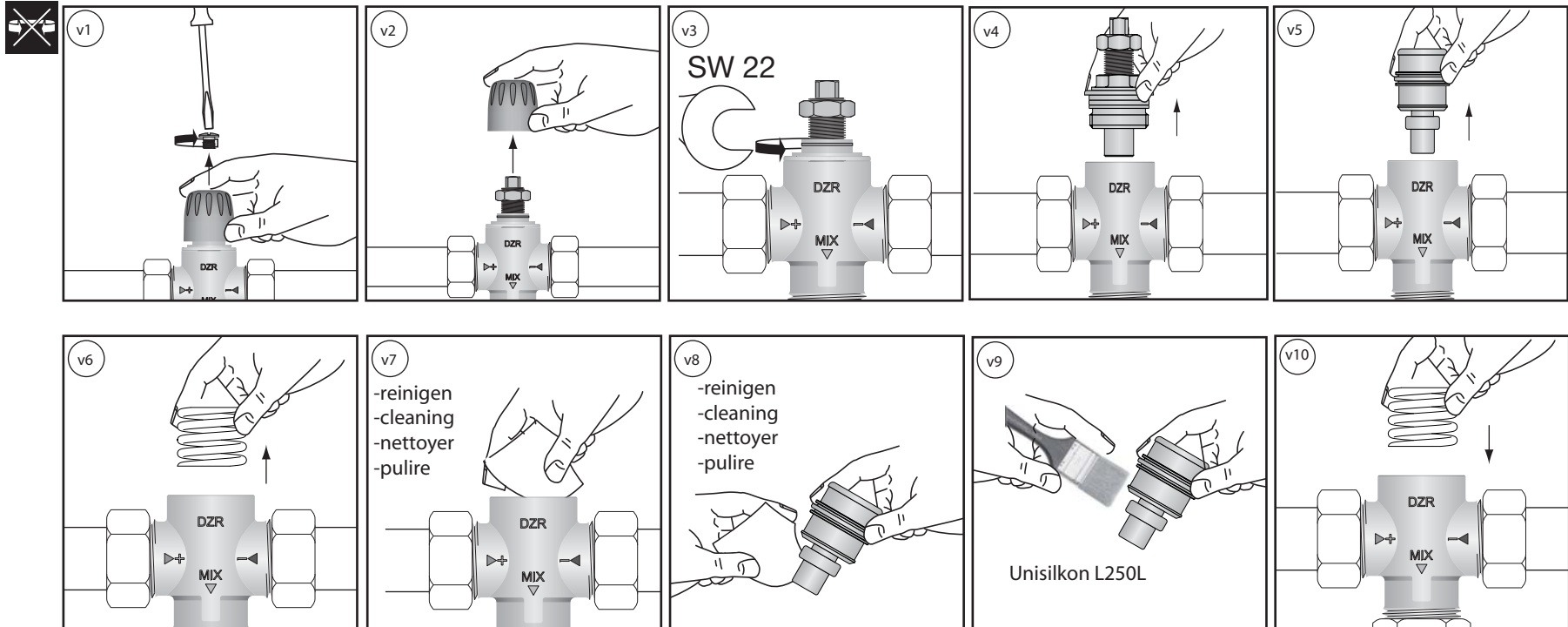


MT 52 ⇒ DN 15 / DN 20 / DN 25
 MT 52 HC ⇒ DN 25



i → v9 Anstatt Unisilikon L250 kann auch ein anderes Silikonfett mit Trinkwasserzulassung verwendet werden
 Instead of Unisilikon L250L another silicone grease with drinking water approval can also be used
 Au lieu de Unisilikon L250L on peut également utiliser une graisse au silicone alternative avec attestation d'eau potable
 Al posto dell'Unisilicone L250L si può usare un'altro grasso al Silicone con omologazione per acqua potabile



MT 52 ⇒ DN 15 / DN 20 / DN 25
 MT 52 HC ⇒ DN 25

