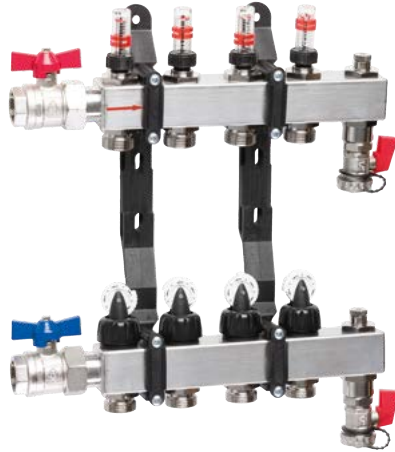


TACOSYS

UNDERFLOOR HEATING MANIFOLD



The TacoSys heating circuit manifolds from Taconova ensure the perfect distribution of heat throughout the entire house.

DESCRIPTION

Thanks to their innovative technology, TacoSys heating circuit manifolds work reliably and according to requirements, and are particularly cost-saving.

The manifold valves are ready to accept Taconova actuators. The manual control valves enable reproducible, manual flow regulation. Different valve settings result in different flow volumes. They thus guarantee individual regulation of the room temperature, precisely tailored to the requirements of your customers.

The vent valves TacoVent Vent caters for fully automatic ventilation

of supply and return, thus enhancing operating safety and user convenience. Whether for use with underfloor heating or radiators, TacoSys offers you high-quality manifold systems that satisfy every customer need.

The underfloor heating manifolds are supplied fully pre-assembled and ready-for-connection, in a robust, non-slip cardboard packing case. The high-quality stainless steel manifold is available in different versions, making it the ideal solution for heating systems of any type. Designed for between two and twelve heating circuits, it meets every requirement in terms of efficiency and durability.

ADVANTAGES

- Lightweight, modern and robust stainless steel manifold bars
- Balancing with the proven TopMeter in supply circuit
- Cone-shaped valve form for fine flow adjustment
- Handwheel positioning with ratchet function for reproducible flow control
- Ventilation with the fully automatic TacoVent Vent air vent
- Glass-fiber reinforced plastic stay for sound-damping assembly
- 100% leakage test

INSTALLATION POSITION

For riser pipe assembly left, right and overhead.

OPERATION

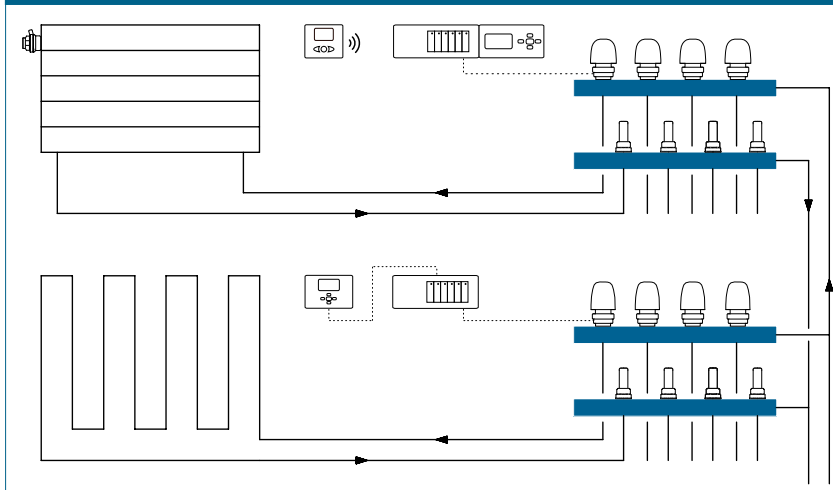
Manifold supply and return bars are connected to the heating system. The heating/cooling circuits can be connected to the two to twelve Eurocone outlets easily using the optional fittings.

The designed flow volume is set for each circuit at the TopMeter. Handwheel or room thermostats with actuators ensure comfortable conditions in individual rooms.

BUILDING CATEGORIES

- Apartment blocks, housing estates, multiple dwelling units
- Residential care facilities and hospitals
- Administration and service buildings
- Hotels and restaurants, industrial kitchens
- School buildings and sports facilities
- Commercial and industrial buildings

SYSTEM/BASIC DIAGRAM



TACOSYS | HEATING CIRCUIT MANIFOLDS

SPECIFICATION TEXT

See www.taconova.com

TECHNICAL DATA

General

- Medium temperature: -10 °C to + 70 °C
- Operating pressure $P_{0\ max}$: 6 bar
- Display accuracy: $\pm 10\%$ of final value
- k_{vs} values and measuring range see „pressure loss diagram“
- Heating circuit connections: $\frac{3}{4}$ " eurocone

Material

- Bars: Stainless steel
- Internal parts: Nickel-plated brass, heat-resistant and impact-proof plastics
- Seals: EPDM O-rings
- Securing brackets: Plastic, glass fiber-reinforced

Fluids

- Heating water (VDI 2035; SWKI BT 102-01; ÖNORM H 5195-1)
- Water free of chemical additives

SERVICE

- Clean only with water, avoid contact with chemicals

SYSTEM COMPONENTS

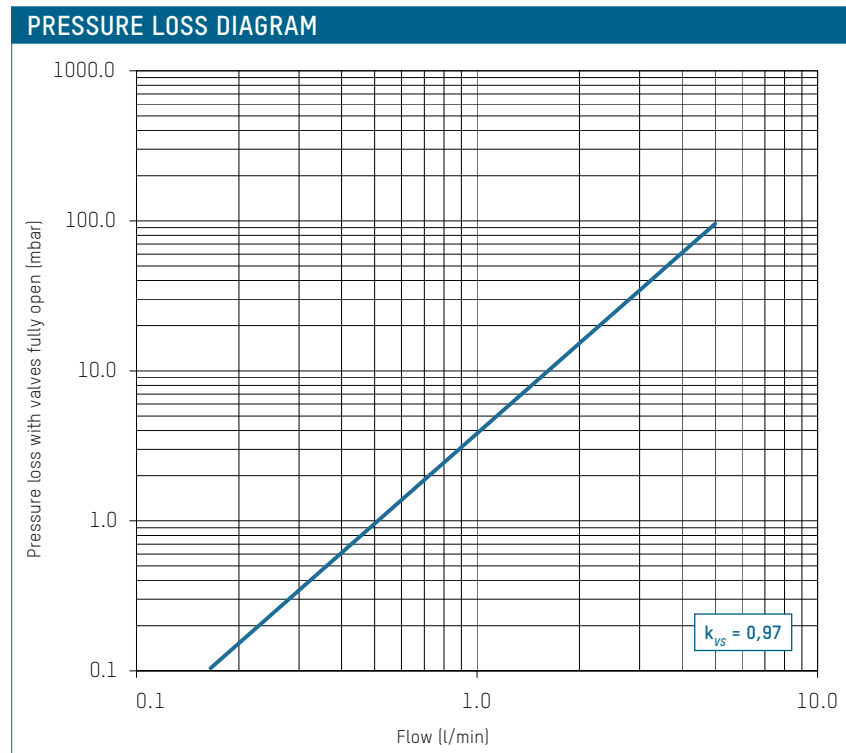
TopDrive and NovaDrive electro-thermal actuators, room thermostats and distribution cabinets: See separate datasheets.

TYPE OVERVIEW

TacoSys High End | Heating manifold with TopMeter Supply and $\frac{3}{4}$ " IT x 1" OT ball valves.

Heating circuits	Flow range	Flow range
	0 – 2,5 l/min	0 – 5 l/min
	Order No.	Order No.
2	286.4002.000	286.1002.000
3	286.4003.000	286.1003.000
4	286.4004.000	286.1004.000
5	286.4005.000	286.1005.000
6	286.4006.000	286.1006.000
7	286.4007.000	286.1007.000
8	286.4008.000	286.1008.000
9	286.4009.000	286.1009.000
10	286.4010.000	286.1010.000
11	286.4011.000	286.1011.000
12	286.4012.000	286.1012.000

TacoSys High End versions without ball valves with manual vent valve on request (see price list: 286.43XX.000 / 286.13XX.000).



NOTE

In order to avoid potential flow noise, we recommend that manifolds with 1" ball valves be used if there are eight or more heating circuits and their valves are fully opened (≥ 2.5 l/min).

NOTE

Adjusting the TacoSys manifold

The floor heating circuits are adjusted at the TacoSys stainless steel manifold using the advance or return TopMeter.

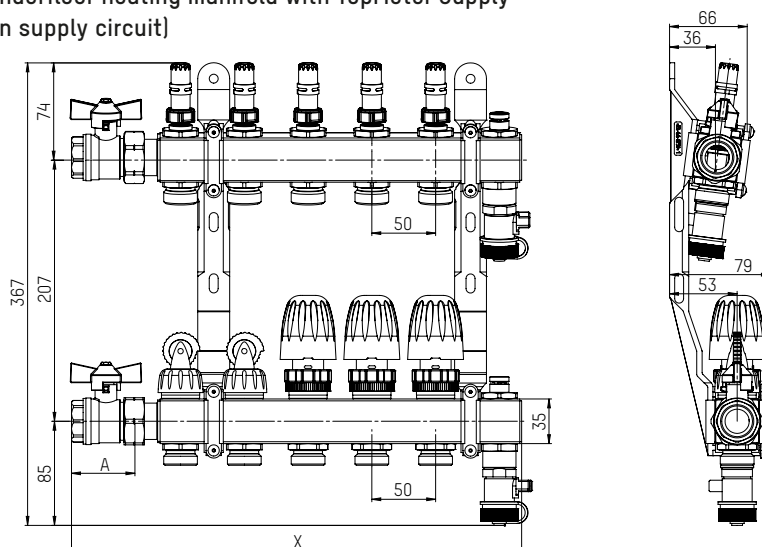
The adjustment process is carried out with the circulating pump running. All of the valves in the heating circuit must be fully open for adjustment.

It may be necessary to remove the electro-thermal actuators.

- 1 Start at the TopMeter of the heating circuit with the smallest flow volume
- 2 Set the calculated volume flow by rotating the black plastic spindle
- 3 Read off the settings from the red indicator collar in the porthole
- 4 Repeat the adjustment process for all of the heating circuits
- 5 Next, check the first values and re-adjust if necessary
- 6 Once adjustment is complete, note the corresponding flow values on the manifold or in the planning documents

DIMENSIONAL DRAWING

Underfloor heating manifold with TopMeter Supply (in supply circuit)



LENGTH DIMENSIONS

Heating circuits	Length X with 3/4" ball valve
2	213 mm
3	263 mm
4	313 mm
5	363 mm
6	413 mm
7	463 mm
8	513 mm
9	563 mm
10	613 mm
11	663 mm
12	713 mm

ACCESSORIES



SCREW CONNECTIONS

Two nickel-plated compression fittings, complete, for plastic and multilayer pipes, with molded seal, slotted compression ring and barrier seal.

Order no.	Dimension	G x mm
210.8614.003	Ø 14 x 2	3/4" x 14
210.8616.003	Ø 16 x 2	3/4" x 16
210.8617.003	Ø 17 x 2	3/4" x 17
210.8618.003	Ø 18 x 2	3/4" x 18
210.8620.003	Ø 20 x 2	3/4" x 20

Additional accessories: see datasheets for manifold cabinets, mixing stations (TacoSys ou Universal), TopDrive or NovaDrive actuators

SPARE PARTS



MANUAL REGULATOR

The ratchet feature on the manual control valves enables a reproducible valve setting.

The valves are preinstalled in the TacoSys High End as standard.

Order no.
296.8651.001



BALL VALVE

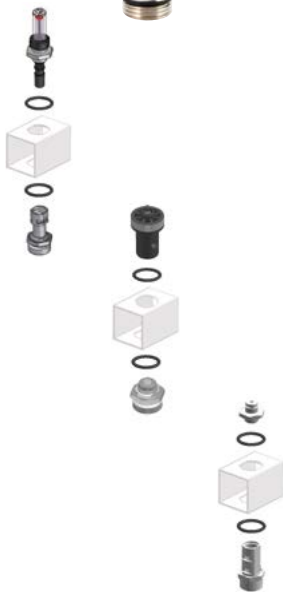
Order no.	Dimension	Length	Handle colour
298.8630.001	3/4"	50 mm	red
298.8631.001	3/4"	50 mm	blue
298.8628.001	1"	65 mm	red
298.8629.001	1"	65 mm	blue



BOILER FILLING AND DRAIN VALVE

The boiler filling and drain valve is only available with red handle

Order no.	Handle colour
296.8653.001	red



VALVE GROUP WITHOUT MANUAL REGULATOR TOPMETER SUPPLY

Order no.	Range
298.8609.001	0 - 2.5 l/min
298.8606.001	0 - 5 l/min

VALVE ASSEMBLY WITHOUT MANUAL REGULATOR

Order no.	Material
298.8613.001	Plastic

AIR VENT GROUP WITHOUT FILLING/DRAINING VALVE

Order no.
298.8604.001

The pipe sections shown are for illustrative purposes only and are not included in the replacement part packs.